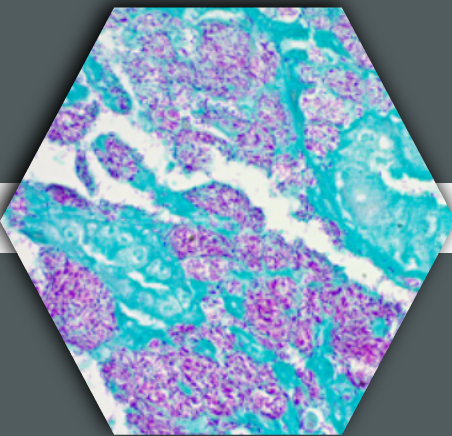


# Special Stain Catalog

- Acid Fast Bacteria (AFB)
- Alcian Blue (pH 1.0)
- Alcian Blue (pH 2.5)
- Alcian Blue - PAS
- Amyloid (Congo Red)
- Beilschowsky's (Modified)
- Calcium (Modified Von Kossa)
- Colloidal Iron
- Copper
- Elastic (Modified Verhoeff's)
- Eosinophil - Mast Cell
- Fite's (Leprosy & Nocardia Procedures)
- Fontana-Masson
- Giemsa (May-Grunwald)
- GMS
- Gram
- H. Pylori
- H. Pylori Rapid Stain (1-Step Single Solution)
- Hematoxylin and Eosin
- Hematoxylin Weigert's Iron Kit
- Iron
- Jones (For Basement Membranes)
- Luxol Fast Blue
- Movat Pentachrome (Modified Movat)
- Mucicarmine (Modified Southgates)
- Oil Red O (For Fat)
- Orcein (For Hepatitis B and Elastic Fibers)
- Papanicolaou (PAP)
- Periodic Acid Schiff (PAS) Diastase
- Periodic Acid Schiff (PAS)
- Periodic Acid Schiff (PAS) for Fungus
- Picro-Sirius Red (For Thin Septa)
- Picro-Sirius Red (For Collagen)
- Pneumocysti
- PTAH
- Quick-Dip Differential
- Reticulum (Green Background)
- Reticulum (Modified Gomori's)
- Steiner (For Spirochetes)
- Sudan Black B (For Fat)
- Trichrome (Modified Gomori's)
- Trichrome (Modified Masson's)
- Twort's Counter
- Warthin-Starry
- Wright-Giemsa



*Carbol Fuchsin Solution*  
*Acid Alcohol Solution*  
*Light Green Solution*

FAB-1  
 FAB-2

**Acid Fast Bacteria (AFB) Stain Kit**

**Catalog #**

The Acid Fast Bacteria (AFB) Stain Kit is intended for use the histological visualization of Acid Fast Bacteria and Tubercle Bacilli. This kit provides a rapid 15-20 minute procedure following tissue hydration. The lipoid capsule of the acid-fast organism takes up carbol fuchsin and resists decolorization. Decolorization of background and counterstaining allow the acid fast organisms to stain bright red to purple against a light green background.

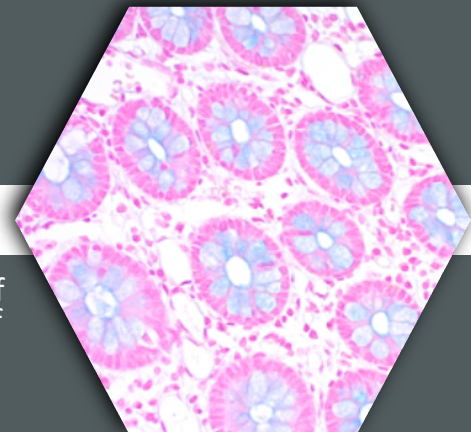
AFT-1  
 AFT-2

*Alcian Blue, pH 1.0*  
*Nuclear Fast Red Solution*  
*Acetic Acid Solution*

**Catalog #**

**Alcian Blue (pH 1.0) Stain Kit**

The Alcian Blue (pH1.0) Stain Kit is intended for use in the histological visualization of strongly sulfated mucosubstances. As opposed to the standard alcian blue of a pH of 2.5 that stains both carboxylic and sulfonic group, this reduced pH of Alcian blue allows it to only selectively stain strongly sulfated mucosubstances. These mucosubstances will stain blue while a Nuclear Fast Red Counterstain provides red nuclei and a pink background. *Alcian Blue Kit at a pH of 0.5 is also available - Product ID: AFS-1*



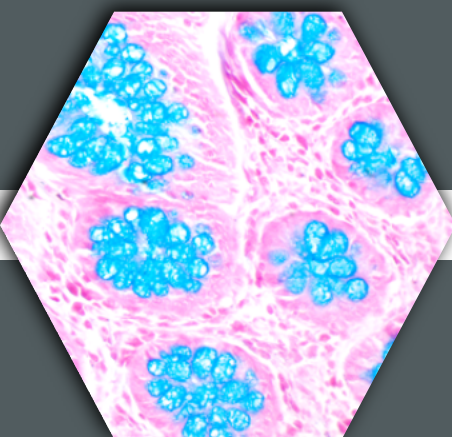
*Alcian Blue, pH 2.5*  
*Nuclear Fast Red Solution*  
*Acetic Acid Solution*

AFR-1  
 AFR-2

**Alcian Blue (pH 2.5) Stain Kit**

**Catalog #**

The Alcian Blue (pH 2.5) Stain Kit is intended for use in the histological visualization of sulfated and carboxylated acid mucopolysaccharides and sulfated and carboxylated sialomucins (glycoproteins). The acidic sulfated mucosubstances, hyaluronic acid and sialomucins will all stain blue. Nuclear Fast Red provides red nuclei and a pink background.



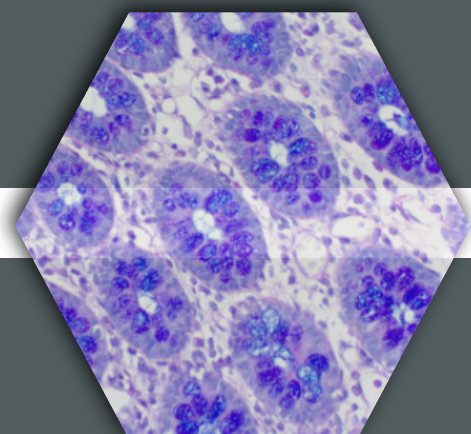
APS-1  
 APS-2

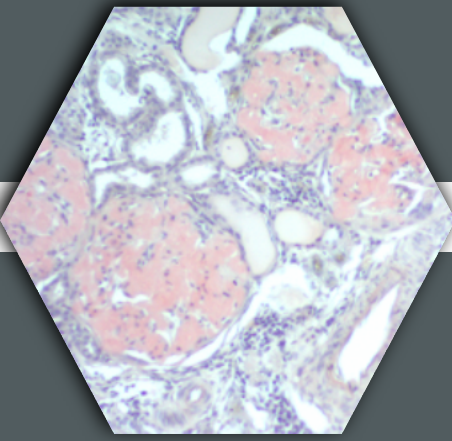
*Hematoxylin, Mayer's*  
*Acetic Acid Solution*  
*Alcian Blue Solution*  
*Schiff's Solution*  
*Periodic Acid Solution*

**Catalog #**

**Alcian Blue - PAS Stain Kit**

The Alcian Blue - PAS Stain kit is intended for use in the simultaneous histological visualization of sulfated and carboxylated acid mucopolysaccharides, sulfated and carboxylated sialomucins (glycoproteins), and neutral mucins. Alcian Blue stains acidic mucins blue and Schiff's Solution stains neutral mucins purple to magenta.





*CongoRed Solution*  
*Hematoxylin, Mayer's*  
*Bluing Reagent*

AMY-1  
 AMY-2

**Amyloid Stain Kit (Congo Red)**

Catalog #

The Amyloid Stain Kit (Congo Red) is intended for use in the histological visualization of amyloid in tissue sections. Examination under a polarizing microscope results in green birefringence of amyloid. The amyloid will stain red to pink, the erythrocytes will stain light orange, the eosinophil granules will stain orange to red and the nuclei will be blue.

BSK-1  
 BSK-2

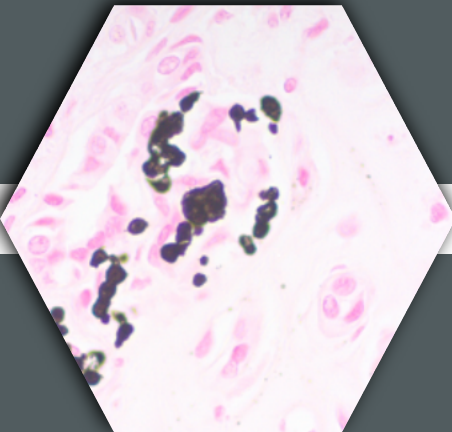
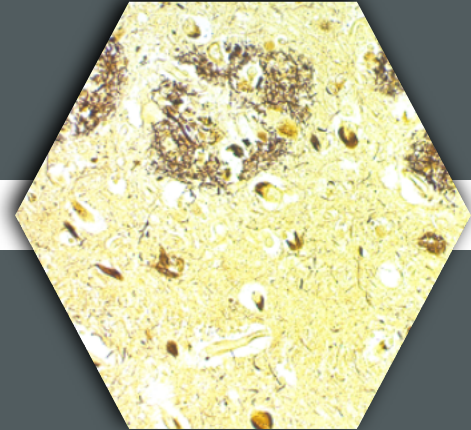
*Silver Nitrate Solution*  
*Formalin Solution*  
*Citric Acid Solution*

*Nitric Acid Solution*  
*Sodium Thiosulfate Solution 5%*

Catalog #

**Bielschowsky's Stain Kit (Mod.)**

The Bielschowsky's Stain Kit (Modified) is a silver stain designed for histological visualization of nerve fibers, neurofibrillary tangles and senile plaques in Alzheimer's disease. This stain was developed by the German Neurologist and neurohistologist Max Bielschowsky.



*Silver Nitrate Solution*  
*Sodium Thiosulfate*  
*Nuclear Fast Red*

CVK-1  
 CVK-2

**Calcium Stain Kit (Mod. Von Kossa)**

Catalog #

The Calcium Stain Kit (Modified Von Kossa) is intended for use in histological visualization of calcium deposits in paraffin sections. The calcium in mass deposits will stain dark brown to black and the calcium in dispersed deposits will stain gray. Nuclear Fast Red counterstains nuclei red and cytoplasm light pink.

CIK-1  
 CIK-2

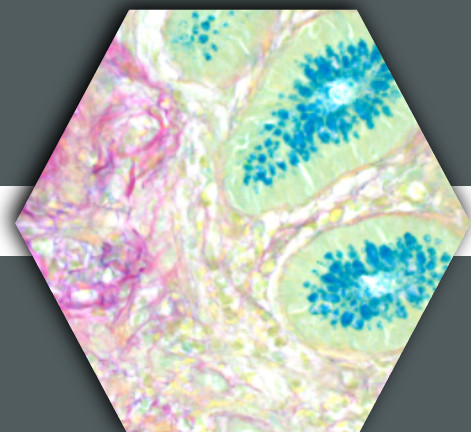
*Acetic Acid Solution*  
*Hydrochloric Acid 1N*  
*Potassium Ferrocyanide*

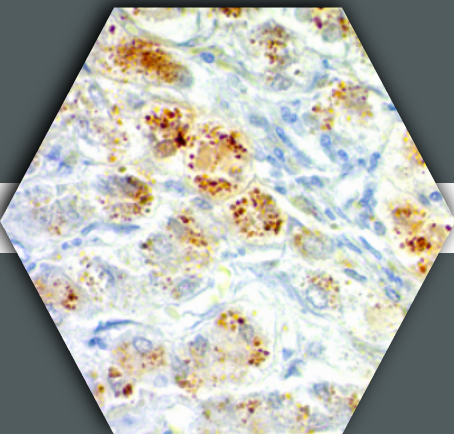
*Van Gieson's Solution*  
*Colloidal Iron Stock Solution*

Catalog #

**Colloidal Iron Stain Kit**

The Colloidal Iron Stain Kit is designed for the histological visualization of acid mucopolysaccharides. Colloidal Iron binds to mucin and then is detected by a classic Perls/Prussian blue reaction. Results provide blue acid mucopolysaccharides, red collagen, and yellow muscle, cytoplasm, and background. Van Gieson's is a counterstain similar to Picrosirius Red, but provides a contrasting background in under a minute.





*Rhodanine Solution*  
*Acetate Buffer*  
*Hematoxylin, Mayer's*

CSK-1  
 CSK-2

**Copper Stain Kit**

Catalog #

The Copper Stain Kit is intended for the demonstration of copper deposits in tissue sections. Rhodanine imparts a red to brown color on copper deposits and our signature hematoxylin is provided for a nuclear counterstain. An optional rapid microwave procedure is also provided on the instructions for use.

ETS-1  
 ETS-2

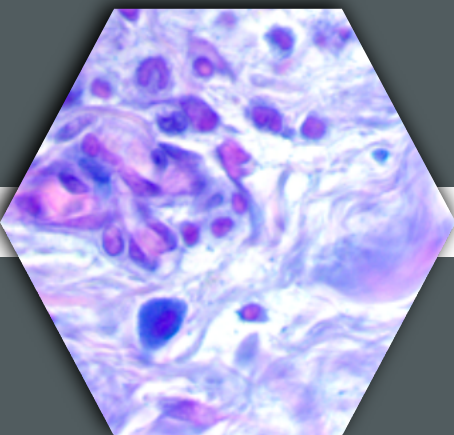
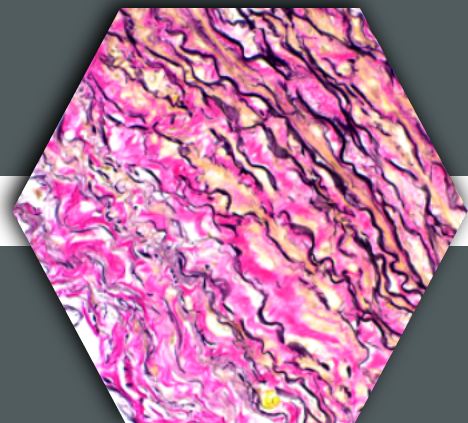
*Hematoxylin Solution*  
*Ferric Chloride Solution*  
*Lugol's Iodine Solution*

*Van Gieson's Solution*  
*Sodium Thiosulfate*

Catalog #

**Elastic Stain Kit (Mod. Verhoeff)**

The Elastic Stain Kit is intended for use in histological demonstration of elastin in tissue sections. Demonstration of elastic tissue is useful in cases of emphysema (atrophy of elastic tissue), arteriosclerosis (thinning and loss of elastic fibers) and various other vascular diseases. A working elastic solution stains elastin fibers and nuclei blue to black while the Van Gieson counterstain stains Collagen red and the muscle yellow.



*Astra Blue Solution*  
*Vital New Red Solution*  
*Hematoxylin, Mayer's*

CEM-1  
 CEM-2

**Eosinophil - Mast Cell Stain Kit**

Catalog #

The Eosinophil - Mast Cell Stain Kit is intended for simultaneous visualization of eosinophils and mast cells. Astra Blue metachromatically stains mast cell granules a bright blue, while the Vital New Red stains eosinophils red and Hematoxylin stains nuclei.

FLS-1  
 FLS-2

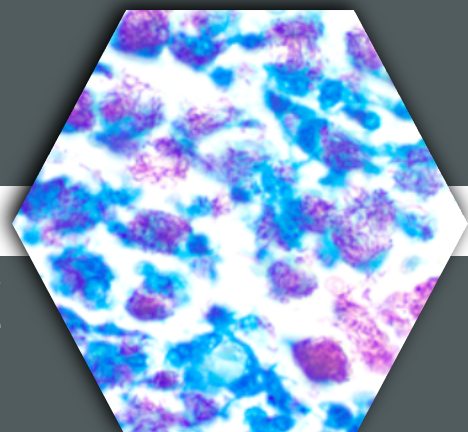
*Carbol Fuchsin Solution*  
*Acid Alcohol 1%*  
*Xylene-Peanut Oil Solution*

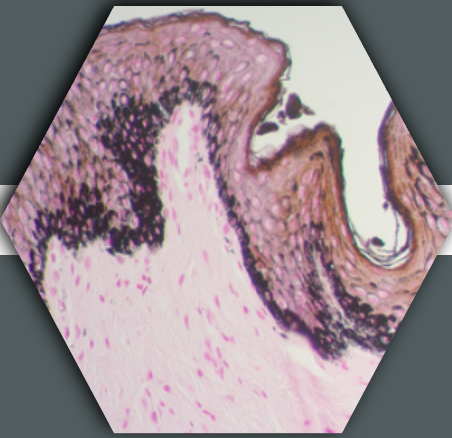
*Methylene Blue Solution*

Catalog #

**Fite's Stain Kit**

The Fite's Stain Kit (For Leprosy) is intended for use in the histological visualization of mycobacterium leprae (leprosy). The lepra bacillus and nocardia will stain red while the background will stain blue. Each individual component in the Fite's Stain Kit is also available for purchase in bulk.





*Gold Chloride Solution 2%*  
*Silver Nitrate Solution 10%*  
*Sodium Thiosulfate 5%*      *Nuclear Fast Red Solution*

FMS-1  
 FMS-2

**Fontana-Masson Stain Kit**

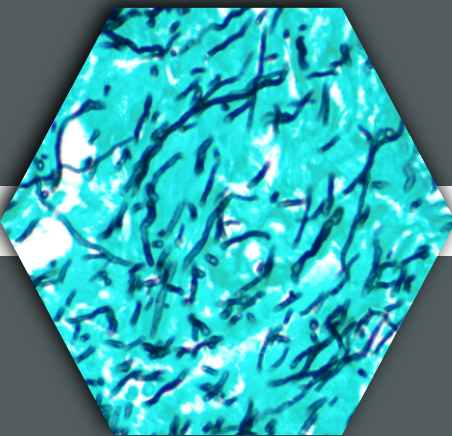
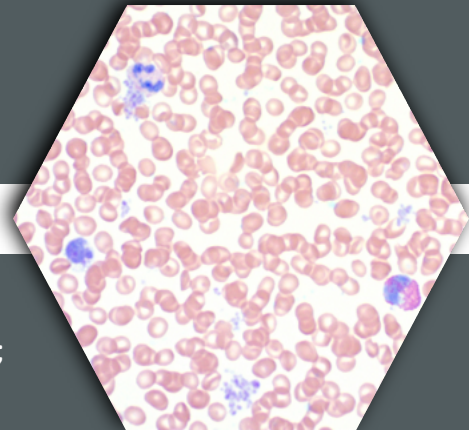
**Catalog #**

The Fontana-Masson Stain Kit (for Argentaffin Cells and Melanin) is intended for use in the histological visualization of Argentaffin cells and Melanin in paraffin sections. The argentaffin cells and melanin stain black. The nuclei stains red and the cytoplasm stains light pink. Each individual component of the Fontana-Masson Stain Kit is also available for purchase in bulk.

GMG-1      *May-Grunwald Solution*  
 GMG-2      *Giemsa Stock Solution*  
                  *Phosphate Buffer Solution*

**Catalog #      Giemsa Stain Kit (May-Grunwald)**

The Giemsa Stain Kit (May-Grunwald) is intended for use in the visualization of cells present in hematopoietic tissues and certain microorganisms. This kit may be used on formalin-fixed paraffin embedded or frozen sections. The Nuclei stains blue/violet; the cytoplasm stains light blue; the collagen and muscle fibers stain pale pink; the erythrocytes stain gray, yellow or pink; the rickettsia stains reddish-purple; the helicobacter pylori stains blue and the mast cells stain dark blue with red granules. Each individual component of the Giemsa Stain Kit is also available for purchase in bulk.



*Silver Nitrate Solution*  
*Methenamine Borax Solution*      *Sodium Bisulfite Solution*  
*Gold Chloride Solution*              *Oxidizin Solution*  
*Light Green Solution*                *Sodium Thiosulfate 5%*

CAA-1  
 CAA-2

**GMS Stain Kit**

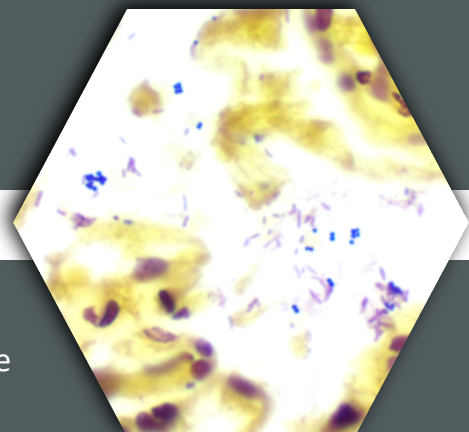
**Catalog #**

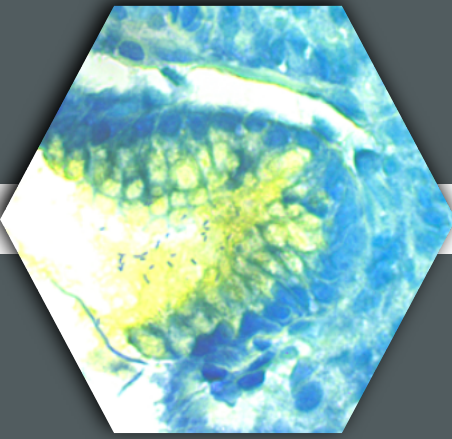
The Modified Gomori Methenamine-Silver Nitrate Stain (GMS Stain Kit) is intended for use in the histologic visualization of fungi, basement membrane and some opportunistic organisms such as Pneumocystis carinii. In addition, this procedure will demonstrate actinomyces and related species, Nocardia asteroides and certain encapsulated bacteria. Both Chromic acid and a less hazardous alternative oxidizer are available.

GSK-1      *Gentian Violet Solution*  
 GSK-2      *Iodine Solution*              *Red Counterstain*  
                  *Gram's Decolorizer*        *Tartrazine Solution*

**Catalog #      Gram Stain Kit**

The Gram Stain Kit is intended for the demonstration and differentiation of Gram-positive and Gram-negative bacteria and has been specially developed for formalin fixed, paraffin embedded tissue. Gram positive bacteria stains blue to violet, while the negative bacteria stain red. Host tissue nuclei also stain red and tartrazine provides a yellow background.





*Periodic Acid Solution*  
*Sodium Metabisulfite Solution*  
*Sodium Hydroxide Solution*

*Toluidine Blue Solution*  
*Alcian Yellow Solution*

AYH-1  
 AYH-2

### H. Pylori Stain Kit

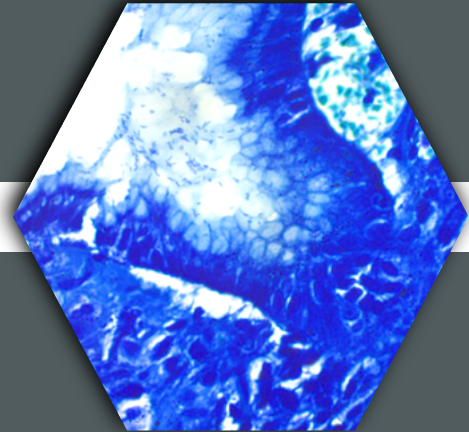
Catalog #

The H. Pylori Stain Kit is designed for demonstrating Helicobacter Pylori in formalin-fixed, paraffin embedded tissue. Toluidine Blue stains helicobacter pylori a dark blue and background light blue. Alcian Yellow stains mucin yellow to provide contrast for the blue H. Pylori.

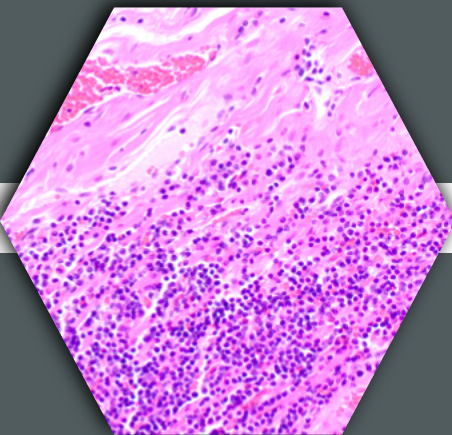
HPS

Catalog #

### H. Pylori Rapid Stain



The H. Pylori Rapid Stain (1-Step) is a single component reagent that has been developed to identify helicobacter pylori in a procedure that requires less than 10 minutes to complete. Procedure is effective for fresh, frozen and paraffin embedded sections. Helicobacter Pylori has been shown to be the causative organism in some gastric ulcers. The H. Pylori stains dark blue/purple, cytoplasm stains pink to red, the nuclei stains blue and the background stains violet.



*Hematoxylin, Mayers (Lillie's Modification)*  
*Bluing Reagent*  
*Eosin Y Solution (Modified Alcoholic)*

HAE-1  
 HAE-2

### Hematoxylin & Eosin Stain Kit

Catalog #

Included in this kit is a newly formulated Eosin that provides the benefits of a traditional alcoholic formula with significant improvements in usability. Advantages include lower evaporation rate, stronger color patterns, reduced tendency to spill over container, hands and countertops and improved surface tension to remain on tissue section. Our hematoxylin produces crisp, intense blue nuclei providing optimal contrast to the Eosin stained cytoplasm and remaining background.

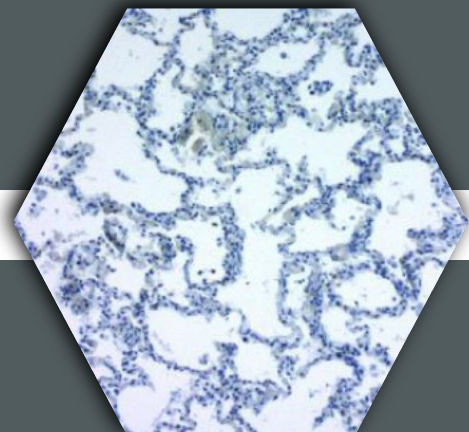
HWI-1  
 HWI-2  
 HWI-3

*Gentian Violet Solution*  
*Iodine Solution*  
*Gram's Decolorizer*

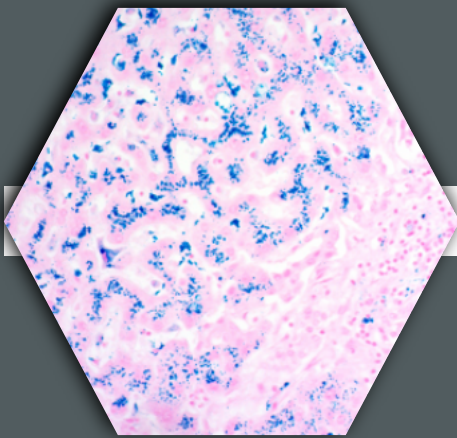
*Red Counterstain*  
*Tartrazine Solution*

Catalog #

### Hematoxylin Weigert's Iron Kit



Weigert's Iron Hematoxylin is intended to be used with various special stain kits and procedures as an acid-resistant nuclear stain. It may also be used as a standalone stain for viewing nuclei. This product is supplied as a two component (equal volumes of parts A and B) system that is mixed prior to use and results in blue/black nuclei.



*Potassium Ferrocyanide*  
*Hydrochloric Acid 2%*  
*Nuclear Fast Red Solution*

IRN-1  
 IRN-2

### Iron Stain Kit

Catalog #

The Iron Stain Kit is intended for use in the detection of ferric iron in tissues, blood smears or bone marrow smears. Ferric iron is normally found in small amounts in bone marrow and the spleen. Abnormally large deposits may be seen in hemochromatosis and hemosiderosis. This product is based on the Prussian Blu reaction in which ionic iron reacts with acid ferrocyanide producing a blue color. Iron stains bright blue and Nuclear Fast Red Solution stains nuclei red and background pink.

*Periodic Acid Solution*  
*Methenamine Solution*  
*Silver Nitrate Solution*  
*Borax Solution*

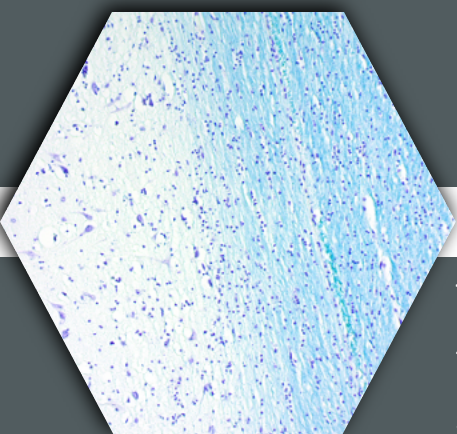
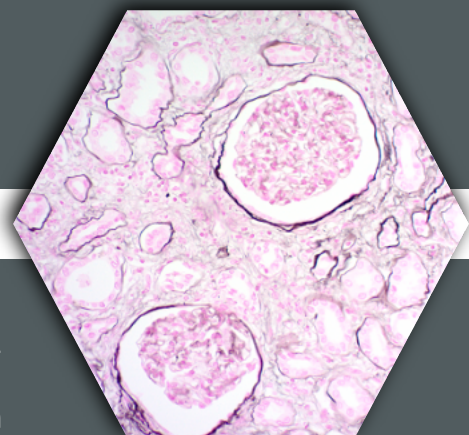
*Gold Chloride Solution*  
*Sodium Thiosulfate Solution*  
*Nuclear Fast Red Solution*

JSK-1

Catalog #

### Jones Stain Kit

The Jones Stain Kit is intended for use in histological demonstration of the basement membrane and reticular fibers. This procedure is ideal for staining renal glomerular basement membranes. The main function of the basement membrane and reticular fibers is to provide anchorage and support. They are normally found throughout the body, particularly in the kidney, spleen, and lung. The basement membrane will stain black, reticular fibers stain black, nuclei stains red and cytoplasm stains light pink.



*Cresyl Echt Viole Solution*  
*Luxol Fast Blue Solution*  
*Lithium Carbonate Solution*

*Alcohol Reagent Solution*

LBC-1  
 LBC-2

### Luxol Fast Blue Stain Kit

Catalog #

The Luxol Fast Blue Stain Kit is designed for staining myelin/myelinated axons and Nissl substance on formalin-fixed, paraffin-embedded tissue. This product is used for identifying the basic neuronal structure in brain or spinal cord sections. Luxol Fast Blue stains myelinated fibers blue while Cresyl Echt Violet Solution stains nissl substance and nerve cells violet.

*Hematoxylin Solution 5%*  
*Ferric Chloride Solutions*  
*Lugol's Iodine Solution*  
*Sodium Thiosulfate Solution 5%*  
*Acetic Acid 3% Solution*

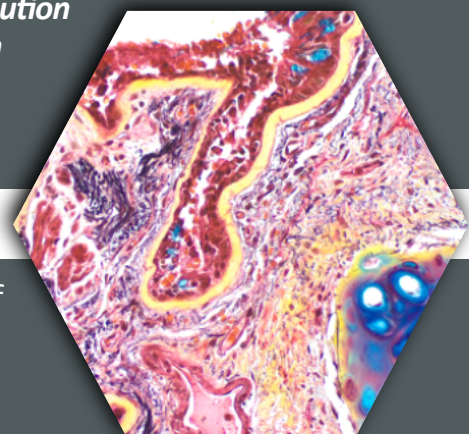
*Phosphotungstic Acid 5% Solution*  
*Biebrich Scarlet- Acid Fuchsin*  
*Acetic Acid 1% Solution*  
*Alcian Blue Solution*  
*Mentanil Yellow Solution*

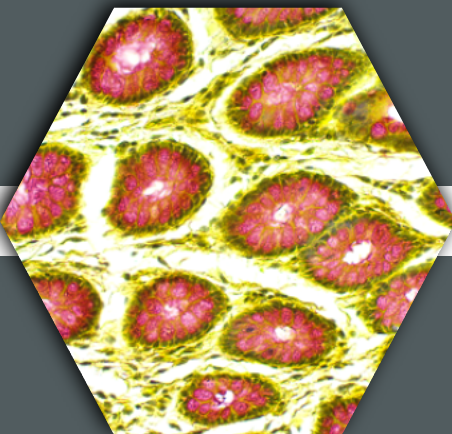
MPS-1  
 MPS-2

Catalog #

### Pentachrome Stain Kit (mod. Movat)

The Movat Pentachrome Stain Kit is intended for use in histological demonstration of collagen, elastin, muscle, nuclei and mucin in tissue sections. This procedure is particularly useful when studying the heart, blood, vessels and various vascular diseases. The elastic fibers and nuclei stain blue/black, collagen stains yellow, mucin stains bright blue and muscle stains red.





*Hematoxylin, Mayer's  
Mucicarmine Solution  
Bluing Reagent*

*Tartrazine Solution*

SMS-1  
SMS-2

### Mucicarmine Stain Kit (Mod. Southgate)

Catalog #

Mucicarmine Stain Kit (Modified Southgate's) is intended for use in the histological visualization of acid mucopolysaccharides in tissue sections. This product is useful in distinguishing mucin-negative undifferentiated squamous cell lesions from mucin positive adenocarcinomas. In addition, this product will stain the mucopolysaccharide capsule of *Cryptococcus neoformans*. Mucin and the capsule of *cryptococcus* stain red, nuclei stain black to green and tartrazine counterstains the background yellow.

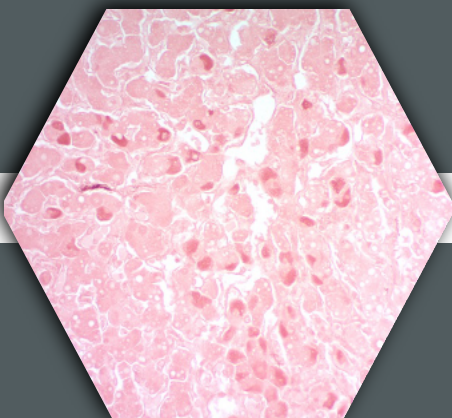
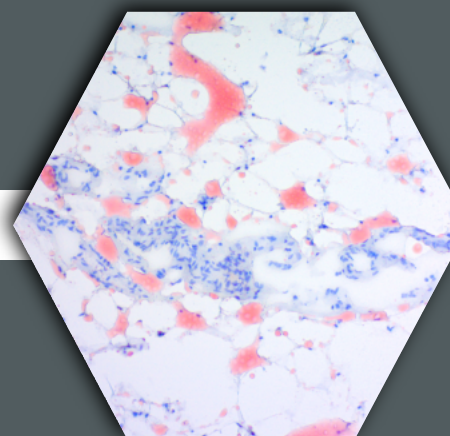
ORK-1  
ORK-2

*Propylene Glycol  
Oil Red O Solution  
Hematoxylin, Mayer's*

Catalog #

### Oil Red O Stain Kit

The Oil Red O Stain Kit (For Fat) is intended for use in the histological visualization of fat cells and neutral fat. This kit may **ONLY** be used on frozen tissue sections, fresh smears or touch preps as xylenes and alcohols will dissolve fat deposits. Fat cells and neutral fat stain red and hematoxylin stains nuclei blue.



*Potassium Permanganate  
Sulfuric Acid Solution  
Oxalic Acid Solution*

*Orcein Solution  
Differentiating Solution*

HBK-1  
HBK-2

### Orcein Stain Kit

Catalog #

The Hepatitis B Stain Kit is intended for use in the histological visualization of Hepatitis B surface antigen (HBsAg). Oxidizing reagents prep the tissue for Orcein staining, then Orcein stains HBsAg, elastin and copper deposits a darker red/brown. The Orcein also provides a light pink background for contrast.

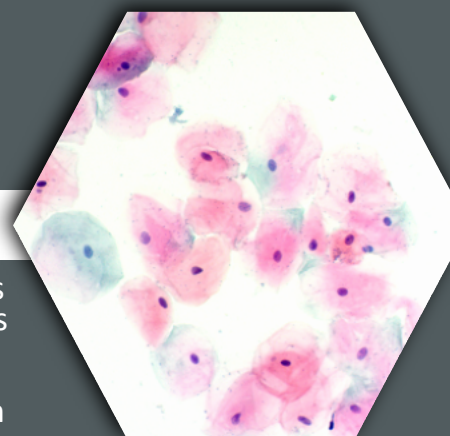
PAP-1  
PAP-2

*Hematoxylin, Mayer's (Lillie's Mod.)  
OG-6 Solution  
EA-50 Stain Solution*

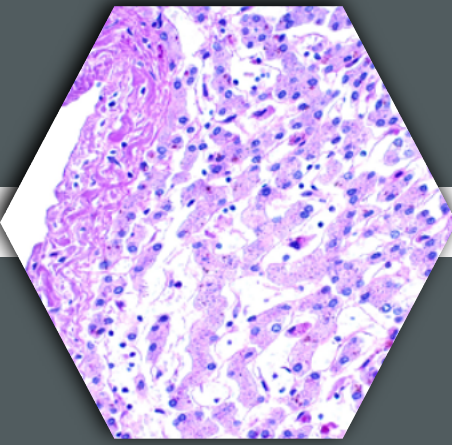
Catalog #

### Papanicolaou (PAP) Stain Kit

The Papanicolaou (PAP) Stain Kit is designed to differentiate between a variety of cells in vaginal smears for detection of vaginal, uterine, and cervical cancer. In addition, this procedure is valuable for staining a variety of other bodily secretions and cell smears. The procedure was developed in the early 1940s by George Papanicolaou. Nuclei stain blue, high keratin cells stain orange, superficial cells stain pink, erythrocytes stain dark pink, parabasal and intermediate cells stain blue/green, and the metaplastic cells may contain both blue/green and pink.







*Periodic Acid Solution*

*Schiff's Solution*

*Hematoxylin, Mayer's*

*Bluing Reagent*

*Alpha-Amylase Solution (1%)*

PAD-1

PAD-2

**Periodic Acid Schiff (PAS) Diastase Stain Kit**    **Catalog #**

The PAS Diastase Stain Kit intended for use in histological demonstration of glycogen in formalin fixed tissues. An Alpha-Amylase solution is provided as a control to differentiate between glycogen and other PAS-positive material. The "digestion" reaction removes glycogen from the tissue allowing the user to determine levels of glycogen present in the undigested section. PAS positive material is then oxidized to aldehydes which allows Schiff's solution to stain magenta followed by a hematoxylin counterstain for nuclei.

PAS-1

PAS-2

*Periodic Acid Solution*

*Schiff's Solution*

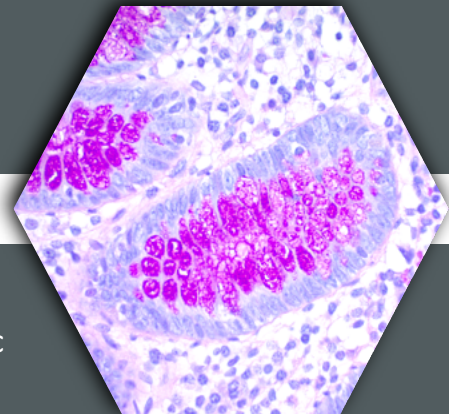
*Hematoxylin, Mayer's*

*Bluing Reagent*

**Catalog #**

**Periodic Acid Schiff (PAS) Stain Kit**

The PAS Stain Kit intended for use in histological demonstration of lymphocytes, mucopolysaccharides, glycogen, Fungi and many other PAS-positive tissue elements. The staining pattern of the lymphocytes are helpful in making therapeutic decisions in established cases of lymphocytic leukemia. PAS-positive material is first oxidized to aldehydes which allows Schiff's solution to stain magenta followed by a hematoxylin counterstain for nuclei. Our Schiff's solution has been specially formulated to provide an intense PAS reaction while also maintaining a long shelf-life. PAS Stain Kit with a green counterstain is also available (PASL-1).



*Periodic Acid Solution*

*Schiff's Solution*

*Light Green Solution*

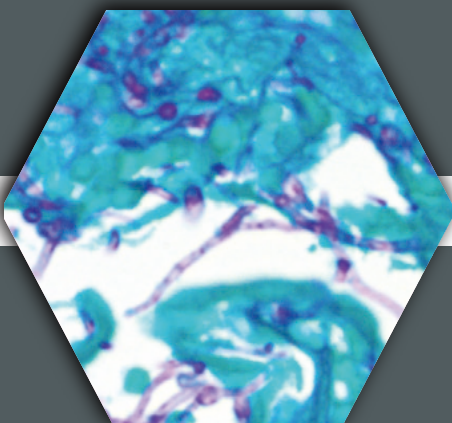
PASF-1

PASF-2

**Periodic Acid Schiff (PAS) Fungus Stain Kit**

**Catalog #**

The PAS for Fungus Stain Kit is intended for use in histological demonstration of fungal organisms in tissue sections. Schiff's Solution stains fungal organisms and PAS positive material magenta and then Light green solution stains the remaining background green/blue.



*Phosphomolybdic Acid Solution (0.2%)*

*Picro-Sirius Red Solution*

*Acetic Acid Solution (0.5%)*

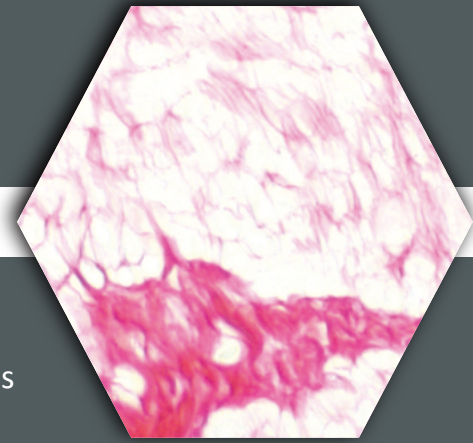
SRC-1

SRC-2

**Catalog #**

### **Picro-Sirius Red Stain Kit (Thin Septa)**

The Picro-Sirius Red Stain Kit (For Thin Septa) is intended for use in the histological visualization of thin septa and collagen fibers. This modification of the Picro-Sirius Red stain eliminates the yellow cytoplasmic staining that can obscure thin collagenous septa. Using this procedure allows viewing of collagenous septa as thin as 0.2 to 0.5 microns. The PSR stain may be viewed using standard light microscopy or polarized light resulting in birefringence of the collagen fibers.



*Picro-Sirius Red Solution*

*Acetic Acid Solution (0.5%)*

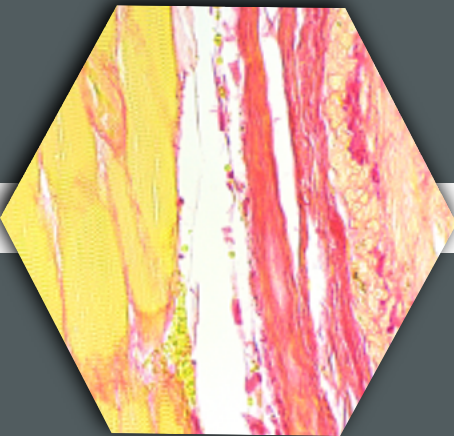
PSR-1

PSR-2

### **Picro-Sirius Red Stain Kit (For Collagen)**

**Catalog #**

The Picro-Sirius Red Stain Kit (For Collagen) is intended for use in the histological differentiation of muscle, background and collagen fibers in tissue sections. The PSR stain may be viewed using standard light microscopy and/or polarized light, which results in the Yellow-Orange and Green birefringence of collagen. Under standard brightfield, collagen stains red and muscle and cytoplasm stain yellow. The PSR stain is commonly used to assess levels of collagen in liver as well.



*Cresyl Echt Violet 0.1%*

*Naphthol Yellow S Solution*

*Staining Jar*

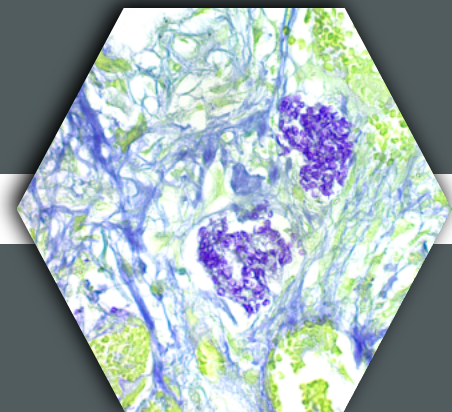
PCS-1

PCS-2

**Catalog #**

### **Pneumocystis Stain Kit**

The Pneumocystis Stain Kit is intended for use in the histological visualization of Pneumocystis carinii in cytology smears and paraffin tissue sections. Pneumocystis carinii stains violet/purple, connective tissue stains blue/green, erythrocytes stain yellow to green, and mucin and cartilage stain rose/purple. Requires customer to provide concentrated acetic and sulfuric acid as an oxidizer.



*Zinc Chloride Solution*

*Ferric Ammonium Sulfate*

*PTAH Solution*

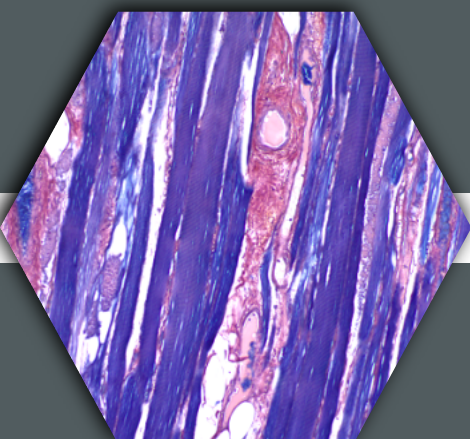
PTA-1

PTA-2

### **PTAH Stain Kit**

**Catalog #**

The PTAH (Phosphotungstic Acid Hematoxylin) Stain Kit for Microwave is intended for use in the histological visualization of collagen, striated muscle and glial fibers without using Zenker's Fixative with Mercuric Chloride as a mordant. Fibrin, striated muscle and glial fibers stain blue to purple. Collagen stains Salmon orange to reddish brown and nuclei stain blue. A rapid microwave procedure is also provided in the Instructions For Use (IFU).



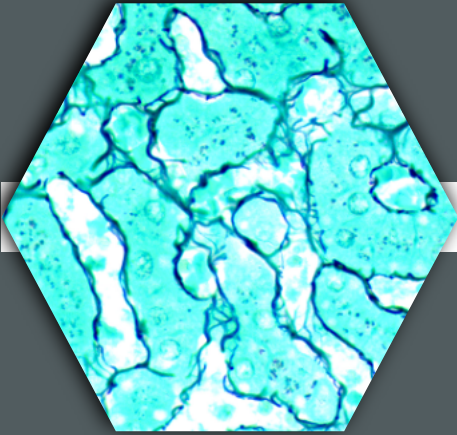
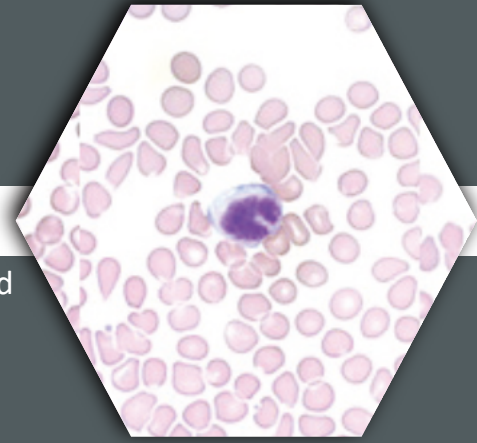
QDK-1  
QDK-GL

*Quick-Dip Fixative*  
*Quick Dip Solution 1*  
*Quick Dip Solution 2*

**Catalog #**

## **Quick-Dip Differential Stain Kit**

The Quick-Dip Differential Stain Kit provides three reagents for rapid staining of blood smears. Methanol is used to quickly fix smears, followed by differential staining with buffered xanthene and thiazine dyes. Quick Dip Solution 2 has also been used as a simple blue stain for formalin fixed tissues and to identify bacteria. **For research use only.**



*Potassium Permanganate*  
*Potassium Metabisulfite*  
*Ferric Ammonium Sulfate*  
*Formalin Solution*

*Gold Chloride Solution*  
*Sodium Thiosulfate*  
*Silver Nitrate Solution*  
*Light Green Solution*

GRT-1

## **Reticulum Stain Kit (Green Background)**

**Catalog #**

The Reticulum Stain Kit is intended for use in histological demonstration of reticular fibers. The main function of reticular fibers is to provide support. They are normally found throughout the body, particularly in liver, lymph node, spleen and kidney. Ammoniacal silver stains are the most commonly used methods for demonstration of reticular fibers. The reticulum fibers stain black and the background stains green/blue.

GRS-1  
GRS-2

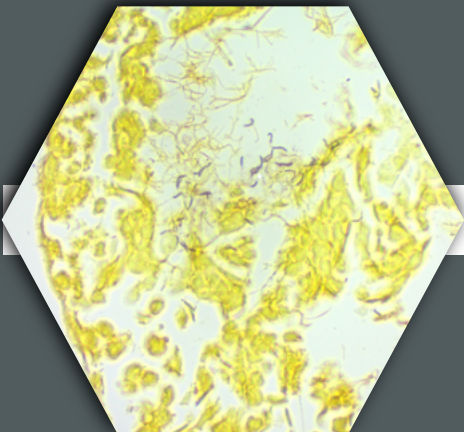
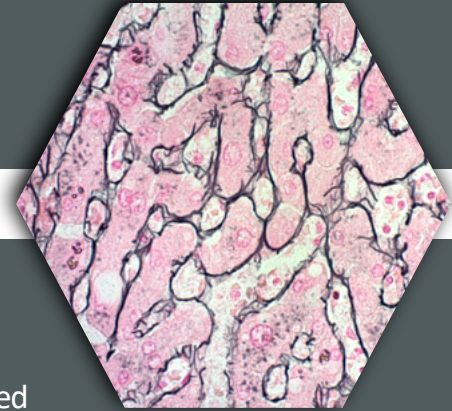
*Potassium Permanganate*  
*Sulfuric Acid 1N*  
*Potassium Metabisulfite*  
*Ferric Ammonium Sulfate*  
*Silver Nitrate Solution 10%*

*Formalin Solution 20%*  
*Gold Chloride Solution 0.2%*  
*Sodium Thiosulfate 5%*  
*Nuclear Fast Red Solution*

**Catalog #**

## **Reticulum Stain Kit (Pink Background)**

The Reticulum Stain Kit is intended for use in histological demonstration of reticular fibers. The main function of reticular fibers is to provide support. They are normally found throughout the body, particularly in the liver, lymph node, spleen, and kidney. Ammoniacal silver stains are the most commonly used methods for demonstration of reticular fibers. The reticulum stains black and the background stains red/pink. Modified Gomori's.



*Oxidizer Solution*  
*Zinc Formalin Solution*  
*Gum Mastic Solution*

*Hydroquinone*  
*Silver Nitrate Solution 0.2%*  
*Silver Nitrate Solution 1%*

SSK-1

## **Steiner Stain Kit (For Spirochetes)**

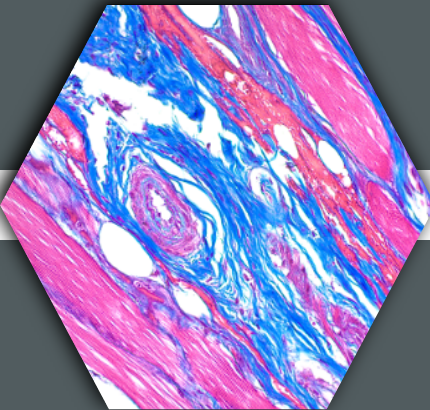
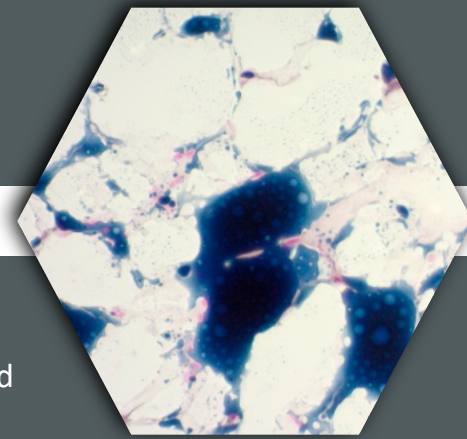
**Catalog #**

The Steiner Stain Kit (For Spirochetes) was developed by doctor and medical assistant Gabriel and Grete Steiner in the 1940's. It remains a common silver stain for demonstrating Fungi, Helicobacter Pylori, Legionella Pneumophila and Spirochete infected tissue. Silver stains Spirochetes, helicobacter pylori, fungi and legionella black to brown while also providing a yellow to tan background for contrast. A rapid microwave procedure is also provided on the Instructions for Use (IFU).

SBK-1 *Propylene Glycol*  
 SBK-2 *Sudan Black B Solution*  
*Nuclear Fast Red Solution*

**Catalog # Sudan Black B Stain Kit (For Fat)**

The Sudan Black B Stain Kit (For Fat) is intended for use in the histological visualization of fat cells and neutral fat. This kit may **ONLY** be used on frozen tissue sections, fresh smears or touch preps as xylenes and alcohols will dissolve fat deposits. Fat cells and neutral fat stain black and nuclear fast red stains nuclei red and background pink.



*Trichrome Stain*  
*Acetic Acid Solution*      *Bouin's Fluid*  
*Acid Alcohol Solution*      *Weigert Iron Hematoxylin A and B*

TRG-1  
 TRG-2

**Trichrome Stain Kit (Modified Gomori's)**

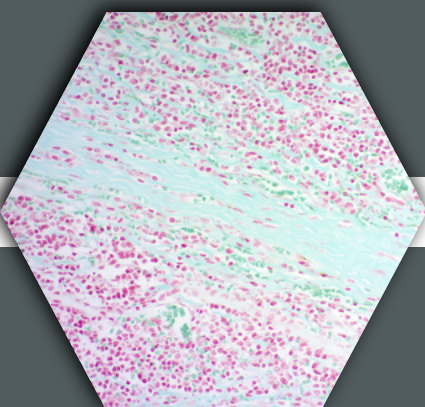
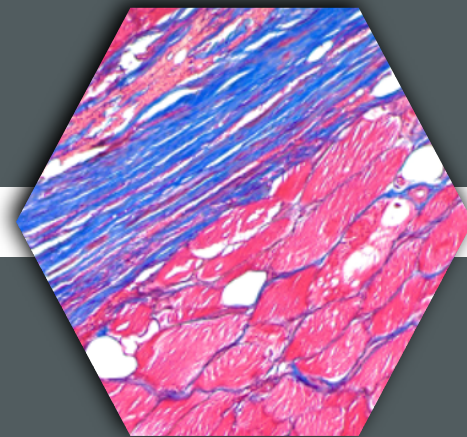
**Catalog #**

The Trichrome Stain Kit (Modified Gomori's) is intended for use in the histological visualization of muscle and collagenous connective tissue fibers in tissue sections. This kit provides accurate differential staining of collagen and muscle via a single ready-to-use solution. Collagen stains blue, muscle stains red and Weigert's Iron Hematoxylin stains nuclei black/blue.

TRM-1 *Biebrich Scarlet/Acid Fuchsin*  
 TRM-2 *Phosphomolybdic/Phosphotungstic*  
*Weigert Iron Hematoxylin A and B*      *Bouin's Fluid*  
*Acetic Acid Solution 1%*      *Aniline Blue Solution*

**Catalog # Trichrome Stain Kit (Modified Masson's)**

The Trichrome Stain Kit (Modified Masson's) is intended for use in the histological differentiation of muscle and collagenous connective tissue fibers in tissue sections. Trichrome stains make use of a third "colorless" stain (Phosphomolybdic/Phosphotungstic acid) that acts as a differentiator for overstained collagen. Aniline Blue stains collagen blue, Biebrich Scarlet/Acid Fuchsin stains muscle fibers red and Weigert's Iron Hematoxylin stains nuclei black/blue.



*Twort's Counterstain A*  
*Twort's Counterstain B*

TCK-1

**Twort's Counterstain Kit**

**Catalog #**

The Twort's Counterstain Kit is a general set of stains designed to provide quick contrast for visualization of tissue sections. Nuclei will stain red and cytoplasm will stain light green.

WSS-1

*SpiroPrep*

*Gelatin Solution*

*Silver Nitrate Solution 0.5%*

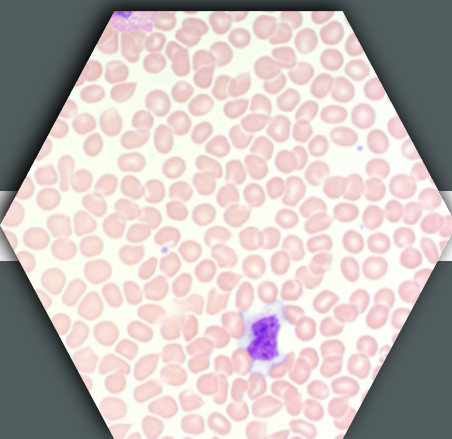
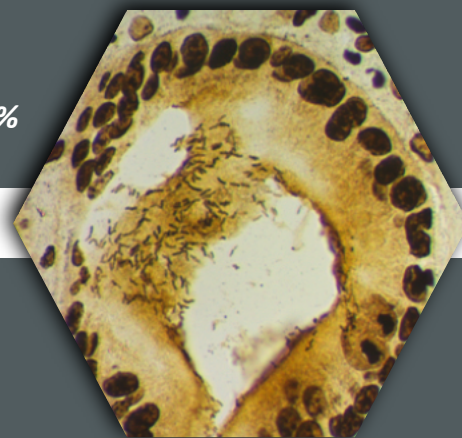
*Hydroquinone Solution 0.1%*

*Silver Nitrate Solution 2%*

Catalog #

## Warthin-Starry Stain Kit

The Warthin-Starry Stain Kit is intended for use in the visualization of Spirochetes, Helicobacter Pylori, Legionella Pneumophila and Cat Scratch Fever bacteria, all of which stain a dark brown to black in under 20 minutes.



*Wright-Giemsa Solution*

*PBS Solution*

WGK-1

WGK-2

## Wright-Giemsa Stain Kit

Catalog #

The Wright-Giemsa Stain Kit is intended to be used for differential staining of blood smears, bone marrow and blood parasites. Erythrocytes stain pink-tan, Neutrophils have purple nuclei with light-red/pink granules, Eosinophils have purple nuclei and bright red granules, Basophils have both granules and nuclei that stain deep purple. Monocytes have kidney-shaped purple nuclei and a light blue background while Lymphocytes have large purple nuclei and also have a light blue background. Platelets stain violet-purple as well.

Distributed by:

# ImTec

## DIAGNOSTICS NV

Contact: [info@imtec.be](mailto:info@imtec.be) | +32(0)3-2251139